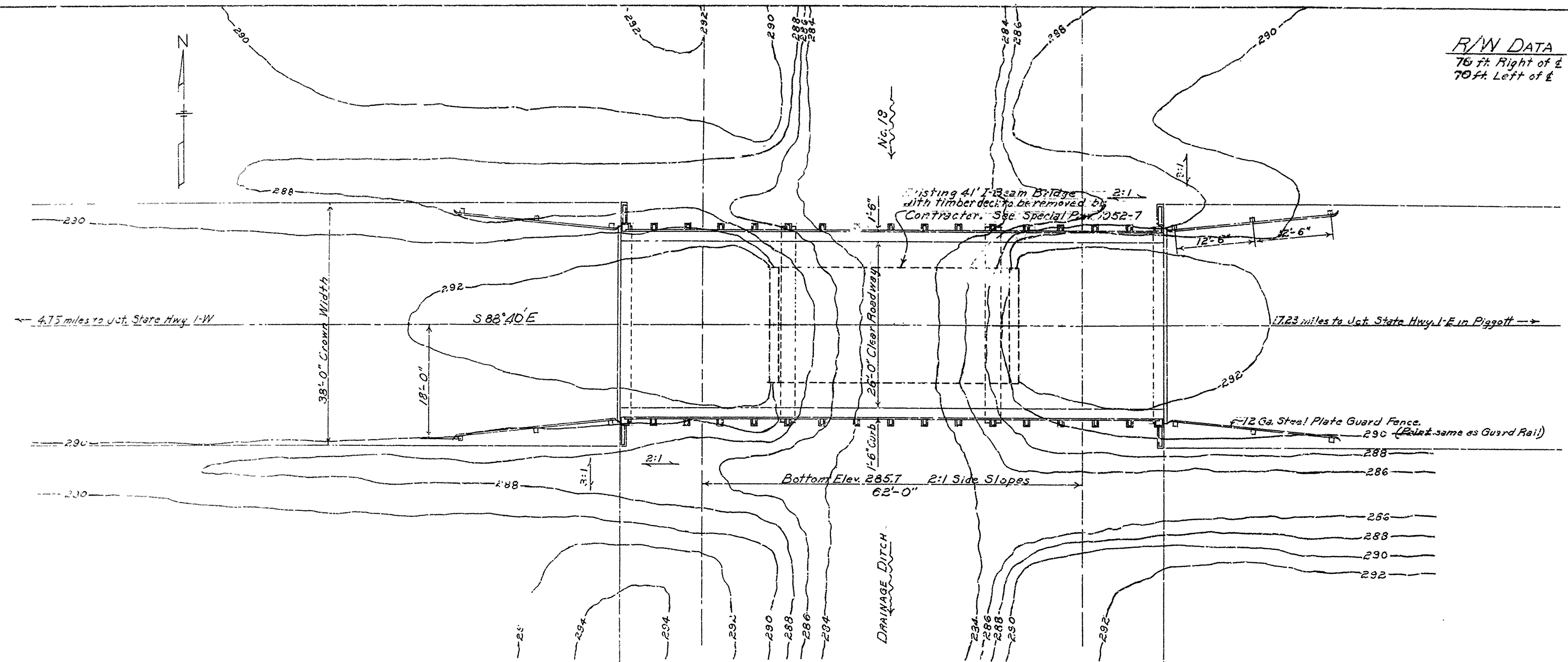


PRO. ROAD DIST. NO.	STATE	PROJECT NO.	FISCAL YEAR	SHEET NO.	TOTAL SHEETS
8	ARK	STATE		7	134
STATE JOB NO. 10441					

R/W DATA
76 ft Right of E
70 ft Left of E



GENERAL NOTES

E.M. Elev. 291.11. Nail in service pole. 35' At Sta 252+45.

Lengths of Piling shown are assumed for estimating quantities only. Actual lengths to be determined in the field. Drive one 30' pile in Bent No. 2 as a test pile. For Details see Drawings No. 5375 & 5376

Loading: H 20 A.A.S.H.O. (Revised 1949)

Stresses:

Class "S" Concrete ($n=10$) 2000 ψ /in²

Reinforcing Steel 20000 ψ /in²

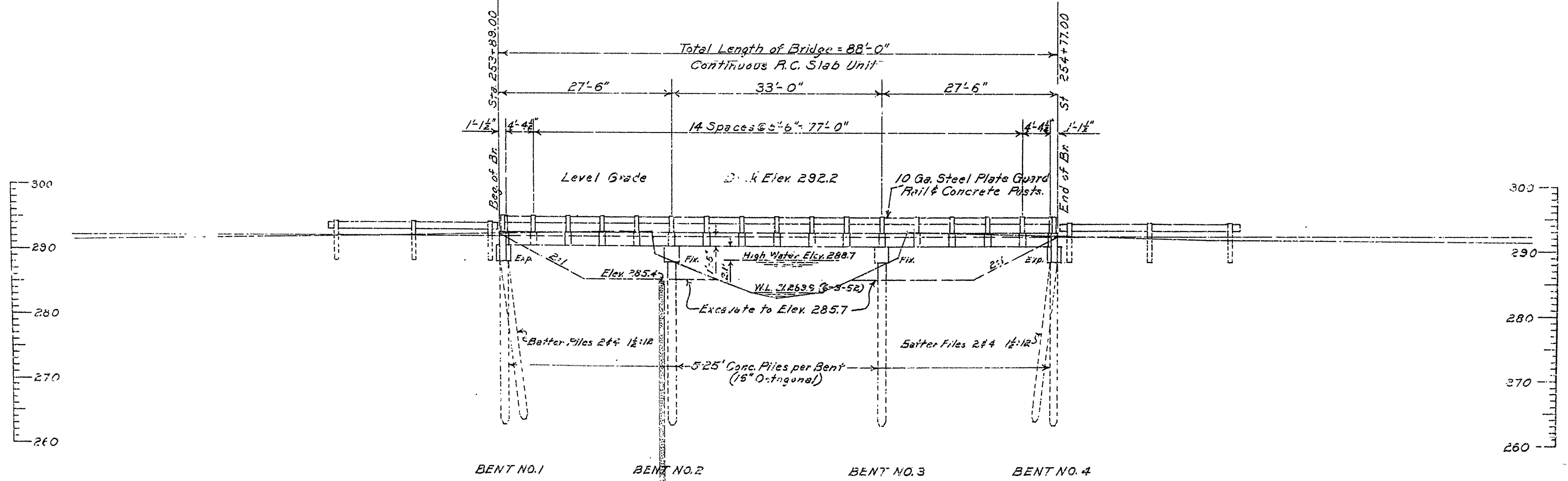
Piles to be driven to a minimum bearing as follows:

Bents 1 & 4 30 Tons per pile.

Bents 2 & 3 40 Tons per pile.

Drains: 1/2" H. C. = 9.5 sq. in.

C = 0.3



LAYOUT OF BRIDGE
OVER DRAINAGE DITCH NO. 19
POLLARD-CORNING JUNCTION
CLAY COUNTY
ROUTE 62 SEC. 20

ARKANSAS STATE HIGHWAY COMMISSION
LITTLE ROCK, ARK.

Designed By: R.H.M. Date: 6-19-52

Traced By: Date:

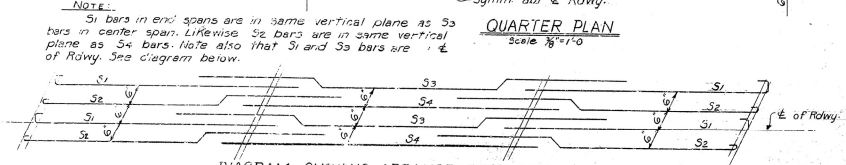
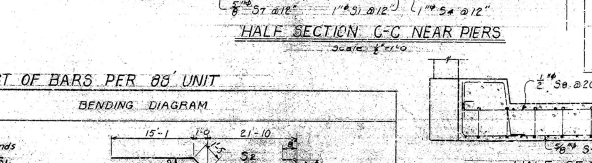
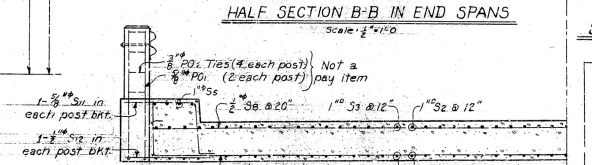
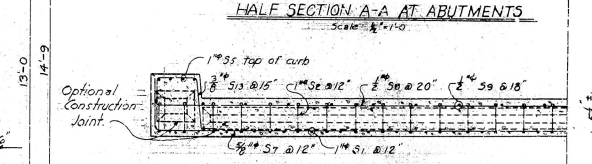
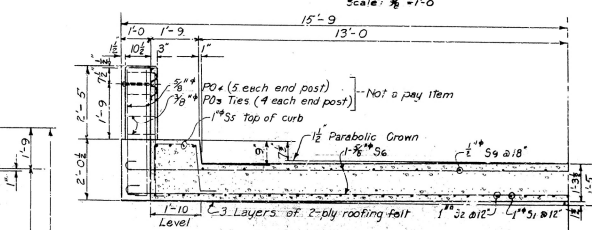
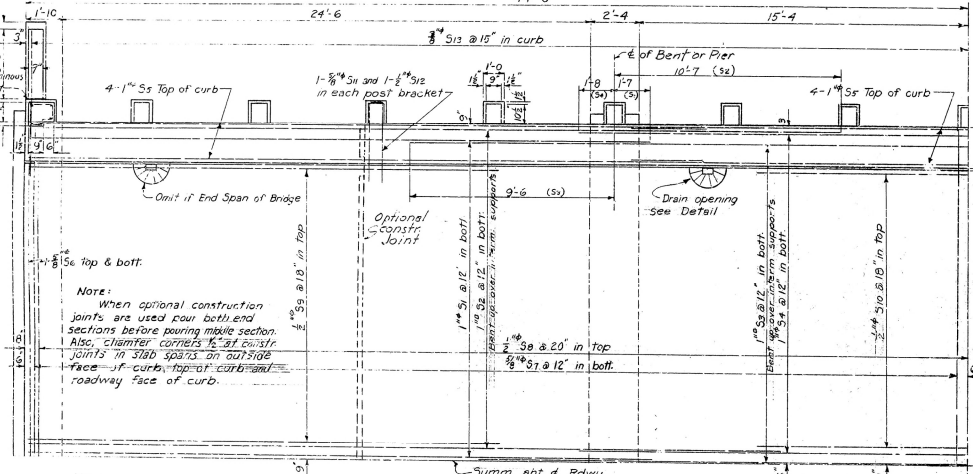
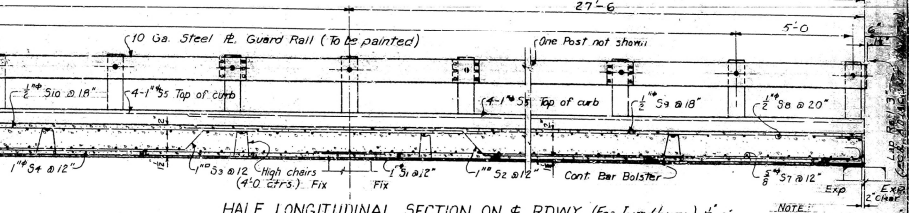
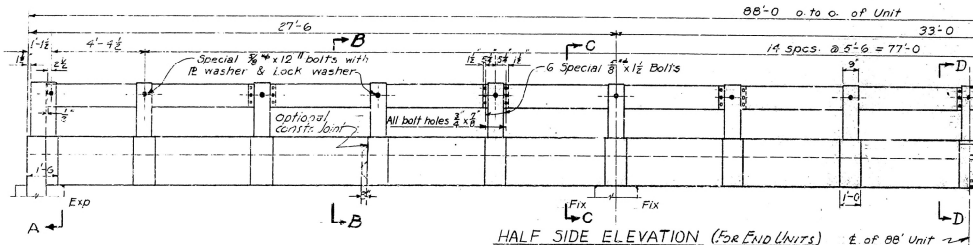
Checked By: Date: 6-20-52

BRIDGE NO. 2858 DRAWING NO. 8206

Scale: 1" = 10'

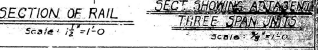
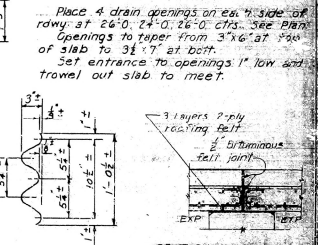
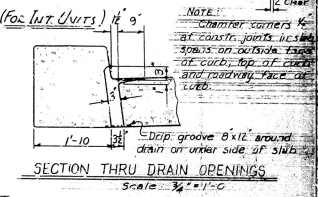
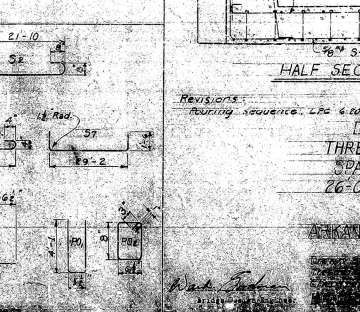
Ward Johnson
Bridge Design Engineer

REV.	DATE	BY	CHKD.	APP.
1	10-23-57	W. J. H.		
2	11-1-57	W. J. H.		
3	11-1-57	W. J. H.		
4	11-1-57	W. J. H.		
5	11-1-57	W. J. H.		
6	11-1-57	W. J. H.		
7	11-1-57	W. J. H.		
8	11-1-57	W. J. H.		
9	11-1-57	W. J. H.		
10	11-1-57	W. J. H.		



LIST OF BARS PER 88' UNIT

MARK	SIZE	NO. REQ'D	LENGTH
51	1"	58	30'-4"
52	1"	60	29'-4"
53	1"	29	52'-10"
54	1"	30	36'-4"
55	1"	24	31'-6"
56	1"	21	32'-2"
57	1"	88	32'-0"
58	1"	53	30'-2"
59	1"	36	18'-6"
60	1"	19	14'-0"
61	3/4"	34	10'-10"
62	3/4"	34	7'-8"
63	3/4"	32	5'-0"
64	3/4"	20	14'-0"
65	3/4"	18	14'-0"
66	3/4"	20	14'-0"
67	3/4"	20	14'-0"



H2O LOADING
Load Distribution to Slab:
Dead Load: 209 #/ft.
Live Load: 0.174 wheels/ft. of width
or Lane Loads:
Uniform Load: 55.7 #/ft.
Concentrated Load: 1507 #/ft. of width
Impact: 30 %
Unit Stresses:
Class "S" conc. (max): 1200 #/ft.
Reinforcing Steel: 20,000 #/ft.

GENERAL NOTES
All concrete to be Class "S". All exposed corners to be chamfered 3" unless otherwise noted.
Reinforcing steel to be deformed bars of intermediate grade. Shop lists and bending diagrams must be submitted by the contractor and approved before fabrication is begun.
All reinforcing steel shall be accurately located in the forms and firmly held in place by means of steel wire supports, sufficient in number and size to prevent displacement during the course of construction and to keep the steel a proper distance from the forms. The wire supports will not be paid for directly but will be considered subsidiary to the item of reinforcing steel. Shop lists and bending diagrams must be submitted for approval.
Payment for roofing and bituminous felt shall be included in the price bid for Class "S" conc. The steel plate guard rail shall be of the type shown or an equivalent rigid type as approved by the Engineer. The steel plate guard rail, including all concrete posts, shall be paid for at the unit price bid per linear foot for "Steel Plate Guard Rail".
SPECIFICATIONS: Arkansas State Highway Commission Standard Specifications for Road and Bridge Construction, adopted March 1, 1940.
* Or sec. Special Provision, 803.5 When included with the job.

DETAILS OF STANDARD 88'-0" THREE SPAN CONTINUOUS R.C. SLAB
SPAN LENGTHS 27'-6" - 33'-0" - 27'-6"
26'-0" CLEAR RDWY. 2 CURBS @ 1'-6"

ARKANSAS STATE HIGHWAY COMMISSION
LITTLE ROCK, ARK.
DRAWING NO. 10172